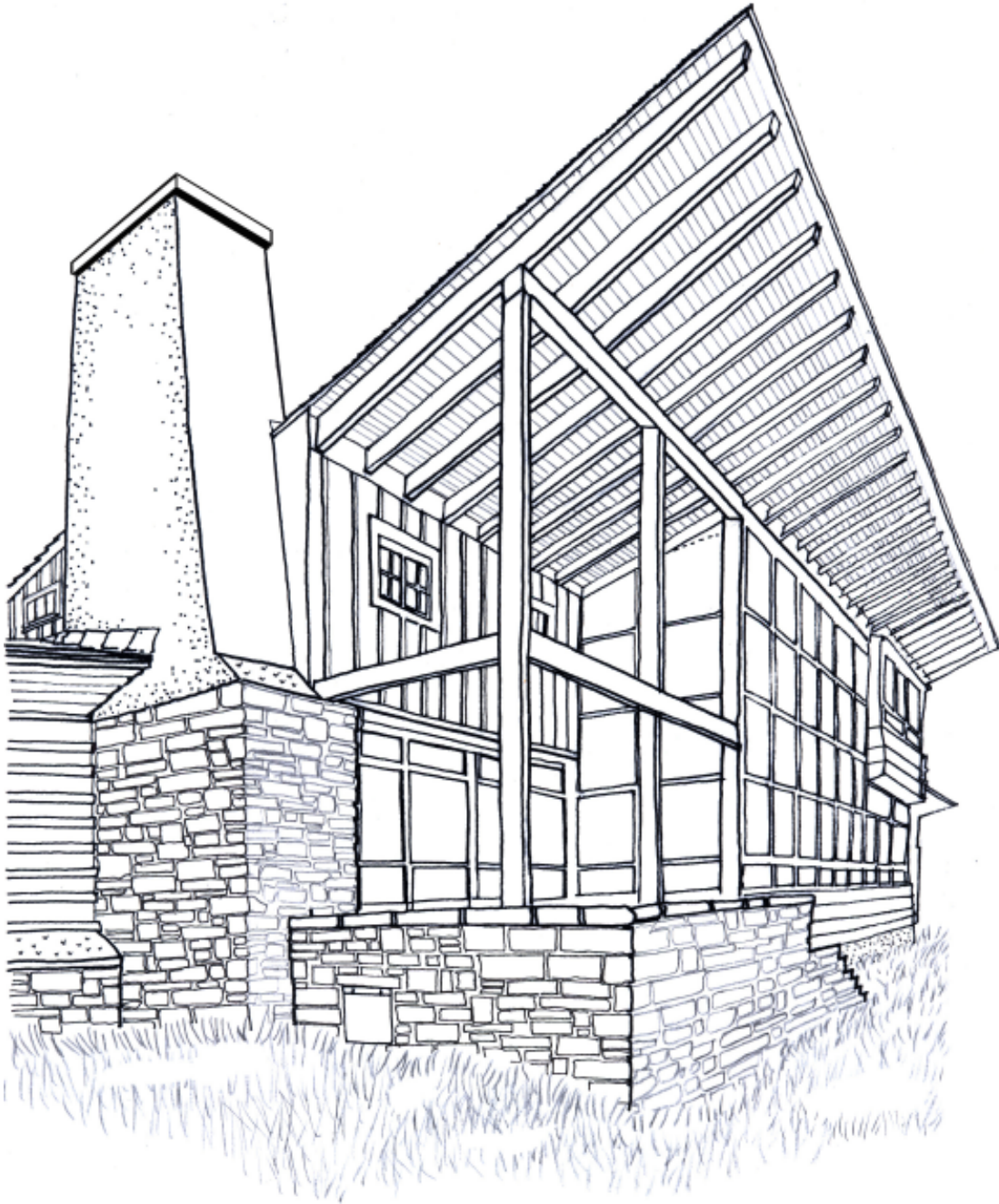


Ramirez Solar House - Milford, PA



Artist: Thomas E. Solon, AIA

When built in 1910 the Ramirez Solar House had expansive porches and intersecting gambrel roofs in a style derivative of the Shingle and Colonial Revival periods. Architect Henry Wright, Jr., an early solar advocate, drastically remodeled the house in 1943. The Modern result features an 18 foot high wall of insulated glass facing south to collect the sun's heat. A dramatic roof overhang controls the amount of sun entering the window wall at different seasons. The overhang provides full shading from the highest path of the sun at mid-day in summer, yet allows the lowest path sun to enter in winter. This is one of the earliest passive solar houses ever built in America. In the remodeling, Henry Wright freely mixed traditional and modern architectural details together. Blending the old with the new, he created a virtual "architectural cocktail." The building is available for historic lease by the National Park Service.