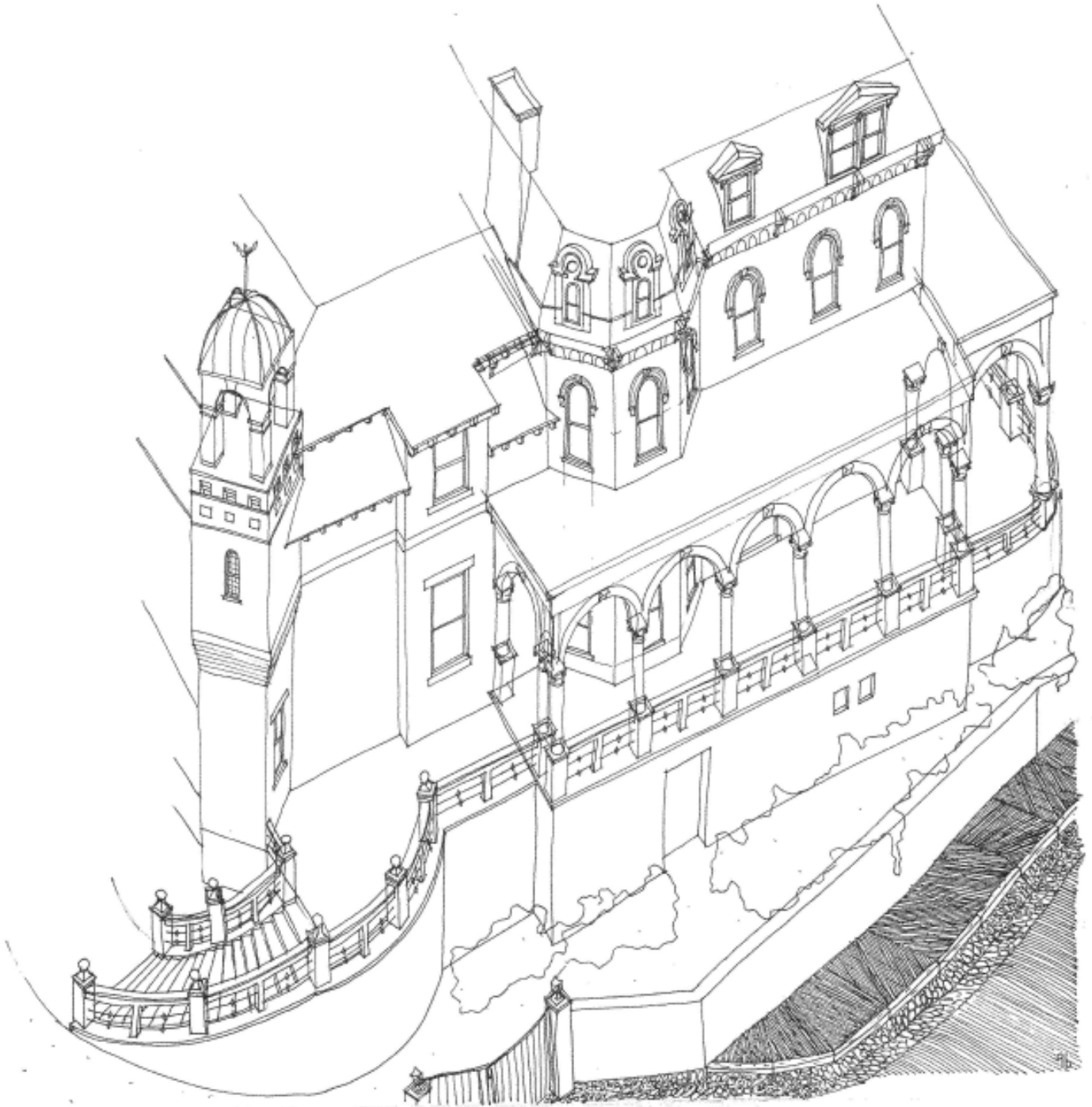


Harry Packer Mansion - Jim Thorpe, PA



Artist: Eugene P. Berg, Jr., AIA

Asa Packer (1805-1879), a prominent Pennsylvania industrialist, philanthropist, and public servant, came to Mauch Chunk (present Jim Thorpe) as an apprentice boat builder. He died 57 years later as a millionaire after founding boatyards, construction and mining companies, the Lehigh Valley Railroad, and Lehigh University in Bethlehem, PA. Asa Packer constructed a Victorian Italianate mansion next to his own mansion in 1874 as a Lehigh Valley Railroad company-owned home. Asa Packer later presented this mansion as a wedding gift to his railroad engineer son, Harry Packer, originating the mansion's name. Asymmetrical and complex in composition, the Harry Packer Mansion juxtaposes a curved slate Mansard roof, pedimented dormers, and a highly ornamented bracketed cornice next to pattern-cut exposed rafter tails and a copper-crowned tower. A verandah featuring Romanesque semi-circular arches springing from Corinthian columns completes the composition.