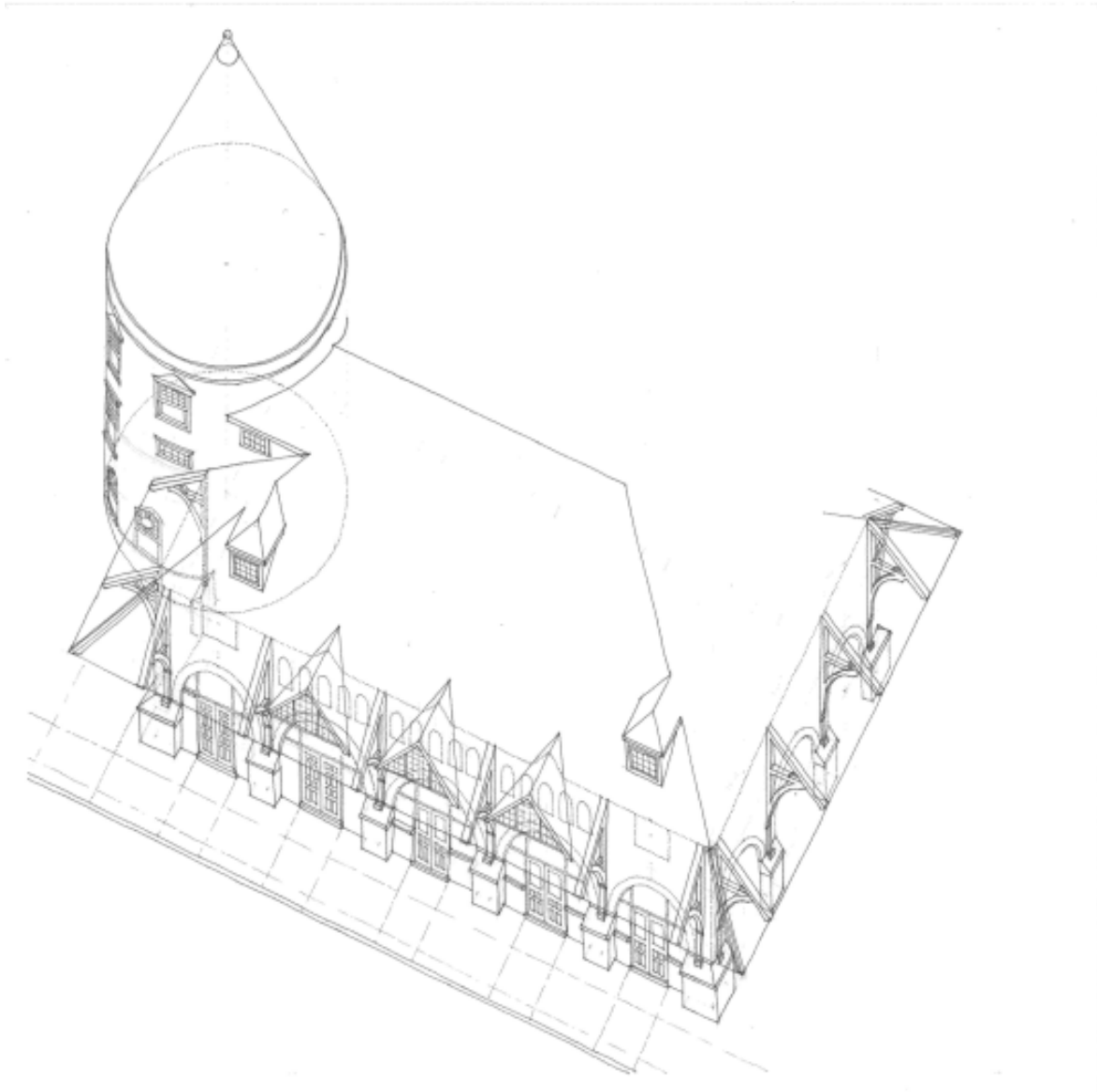


Central Railroad of New Jersey Passenger Station - Jim Thorpe / Mauch Chunk, PA



Artist: Eugene P. Berg, Jr., AIA

Constructed in 1868, the Central Railroad of New Jersey Passenger Station was designed by the firm of Wilson Brothers of Philadelphia. It is a brick one and one-half story building, five bays in length with a three and one-half story cylindrical tower. Once considered one of the finest passenger stations on the Jersey Central line, the main mass of the station is covered by a gable roof and supported by brackets, with two gabled end dormers on either side, double chimneys at either end, and a large wooden turret which dominates the building. This terminal was a major rail junction in the anthracite region.

With discontinuance of railroad passenger service in 1963, the station began to deteriorate, and on March 31, 1972, 106 years to the day the Jersey Central had begun its operation of the Lehigh and Susquehanna Division, the station was officially closed. Listed in the National Register of Historic Places in 1976, the station was renovated and now houses the Jim Thorpe Tourist Welcoming Center.